



# WIRE ROPE HOIST

CRANE LIFTING MECHANISM

SERIES:

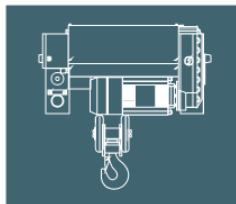
**NHA** (Low headroom)

**NHA-D** (Double girder)

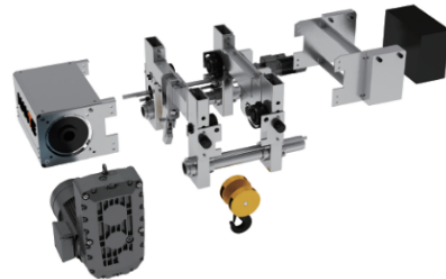
**NHA-F** (Fixed type)

**NHA-C** (Monorail type)

*NHA Hoists adhere to Australian Standards*



**Hydromech** are proud to partner with Nante Cranes for any sized project. Hydromech can provide manufacturing solutions across the country and the world with either locally manufactured goods, or with the backing of a proven ISO accredited company, ensuring your enquiries on big projects are met with quick responses, providing high quality products built in very competitive lead times, with elite engineering capabilities.



## DESIGN FEATURES

**Lifting Gear Motor:** Compact design, smooth operation, and low noise level. 3-in-1 system integrated by pole-changing professional hoisting motor, different gear ratio provides more options for variable lifting speeds. Low energy consumption motor. High performance and stable brake with electromagnetic disk type IP55/IP56/IP66. Class F/H.

**Rope Drum:** Made of seamless tube, CNC Machined with precision concentricity. Advance processing methods ensure unrivalled tolerance of the reels. The depth of rope groove complies with FEM standards. High strength lock plates are fastened on the drum to stabilise wire positioning ensuring you can lift safely.

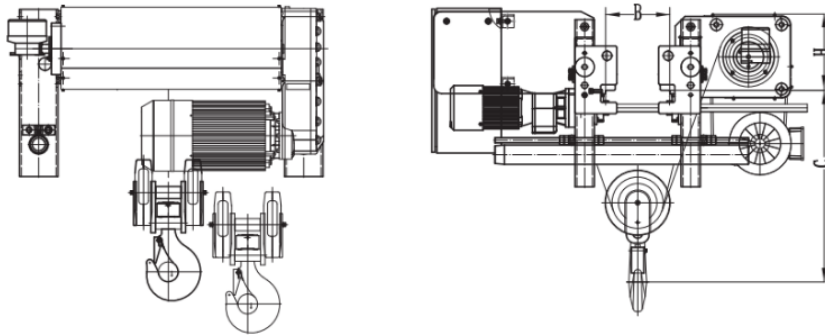
**Wire Rope:** Leading brand wire rope, offering high performance and unrivalled strength with zinc surfacing plating to effectively prevent corrosion. High breaking force and excellent flexibility.

**Hook:** Forged from high strength alloy steel, the T grade hook meets DIN standards with a safety clasp and wire rope sheath ergonomically designed.

**Control Panel:** Leading brand electrical unit and inverter for long service life. Clear labelling and socket design for easy maintenance and wiring. Multiple protection devices ensure safe operation.

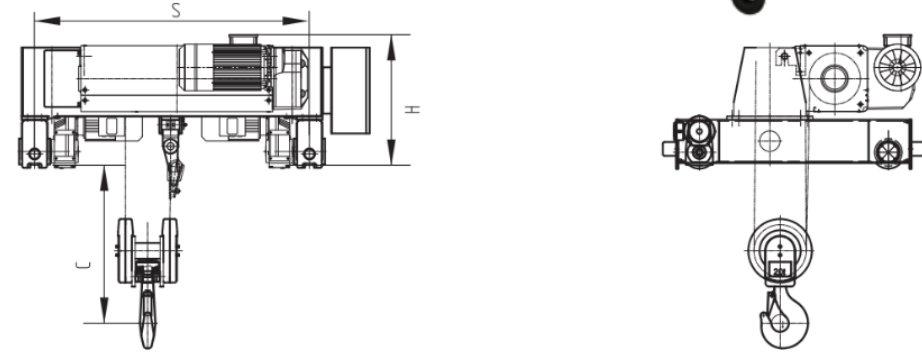
# NHA

## Low Headroom Hoist



# NHA-D

## Double Girder Hoist

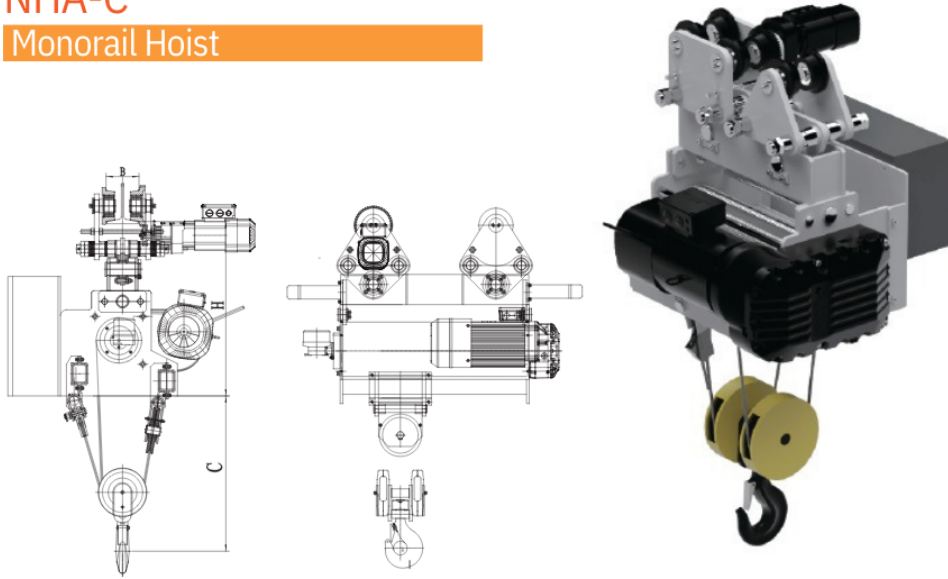


Capacity (t)	Lifting Height (m)	Lifting Speed (m/min)	Rope Reeving	Lifting Power (kW)	Travel Speed (m/min)	Travel Power (kW)	Work Duty FEM/ISO	H (mm)	C (mm)	Rail Gauge B(mm)
2	6/9/12/15/18	4.8/0.8	4/1	3.6/0.55	20/5	0.64	3m M6	210	556	150-300
3.2	6/9/12/15/18	4.8/0.8	4/1	3.6/0.55	20/5	0.64	2m M5	210	556	150-300
5	6/9/12/15/18	4.6/0.8	4/1	6.1/0.9	20/5	0.64	2m M5	260	596	200-350
6.3	6/9/12/15/18	4.6/0.8	4/1	6.1/0.9	20/5	0.64	1Am M4	260	596	200-350
8	6/9/12/15/18	4.2/0.7	4/1	9.0/1.4	20/5	0.95	3m M6	325	750	200-410
10	6/9/12/15/18	4.2/0.7	4/1	9.0/1.4	20/5	0.95	2m M5	325	750	200-410
12.5	6/9/12/15/18	4.6/0.8	4/1	11.0/1.8	20/5	0.95	1Am M4	325	750	200-410
16	6/9/12/15/18	3.5/0.6	4/1	15/2.3	20/5	0.95x2	2m M5	400	920	300-450
20	6/9/12/15/18	3.5/0.6	4/1	15/2.3	20/5	0.95x2	1Am M4	400	920	300-450

Capacity (t)	Lifting Height (m)	Lifting Speed (m/min)	Rope Reeving	Lifting Power (kW)	Travel Speed (m/min)	Travel Power (kW)	Work Duty FEM/ISO	H (mm)	C (mm)	Rail Gauge S(mm)
2	6/9/12/15/18	4.8/0.8	4/1	3.6/0.55	20/5	0.25x2	3m M6	500	420	1400-2000
3	6/9/12/15/18	4.8/0.8	4/1	3.6/0.55	20/5	0.25x2	2m M5	500	420	1400-2000
5	6/9/12/15/18	4.6/0.8	4/1	6.1/0.9	20/5	0.25x2	2m M5	520	425	1400-2000
6	6/9/12/15/18	4.6/0.8	4/1	6.1/0.9	20/5	0.37x2	1Am M4	520	425	1400-2000
8	6/9/12/15/18	4.2/0.7	4/1	9.0/1.4	20/5	0.37x2	3m M6	550	580	1400-2000
10	6/9/12/15/18	4.2/0.7	4/1	9.0/1.4	20/5	0.37x2	2m M5	550	580	1400-2000
10	6/9/12/15/18	0.6-3.5	4/1	9.6	20/5	0.37x2	2m M5	550	580	1400-2000
12.5	6/9/12/15/18	4.6/0.8	4/1	11.0/1.8	20/5	0.64x2	1Am M4	550	580	1400-2000
12.5	6/9/12/15/18	0.8-4.9	4/1	13	20/5	0.64x2	1Am M4	550	580	1400-2000
16	6/9/12/15/18	3.5/0.6	4/1	15/2.3	20/5	0.96x2	2m M5	720	920	1400-2400
20	6/9/12/15/18	3.5/0.6	4/1	15/2.3	20/5	0.96x2	1Am M4	720	920	1400-2400
20	6/9/12/15/18	3.5/0.6	8/2	15/2.3	20/5	0.96x2	2m M5	720	920	1800-2700
20	6/9/12/15/18	0.6-3.7	8/2	16	20/5	0.96x2	2m M5	720	920	1800-2700
25	6/9/12/15/18	3/0.5	12/2	17/2.8	20/5	1.1x2	2m M5	850	800	1800-3800
25	6/9/12/15/18	0.5-3.1	12/2	19	20/5	1.1x2	2m M5	850	800	1800-3800
32	6/9/12/15/18	2.7/0.5	12/2	17/2.8	20/5	1.5x2	1Am M4	850	800	1800-3800
32	6/9/12/15/18	0.4-2.5	12/2	19	20/5	1.5x2	1Am M4	850	800	1800-3800
32	6/9/12/15/18	3.4/0.8	16/2	22/5.5	20/5	1.5x2	3m M6	1025	800	1800-3800
32	6/9/12/15/18	0.9-3.9	16/2	30	20/5	1.5x2	3m M6	1025	800	1800-3800
40	6/9/12/15/18	2.6/0.7	16/2	22/5.5	20/5	1.5x2	2m M5	1025	800	1800-3800
40	6/9/12/15/18	0.7-3.5	16/2	30	20/5	1.5x2	2m M5	1025	800	1800-3800
40	6/9/12/15/18	0.8-4.0	12/2	40	20/5	1.5x2	2m M5	1025	800	2200-3800
50	6/9/12/15/18	2.1/0.5	16/2	22/5.5	20/5	2.2x2	1Am M4	1090	800	1800-3800
50	6/9/12/15/18	0.8-4.0	12/2	40	20/5	2.2x2	1Am M4	1090	800	2200-3800
63	6/9/12/15/18	0.7-3.0	12/2	40	20/5	3x2	1Am M4	1090	800	2200-3800

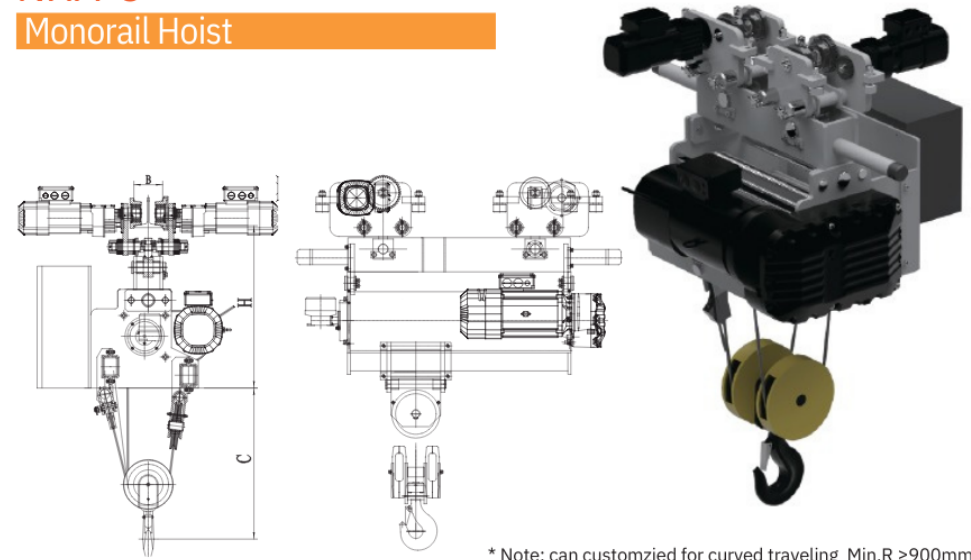


**NHA-C**  
Monorail Hoist



Capacity (t)	Lifting Height (m)	Lifting Speed (m/min)	Rope Reeving	Lifting Power (kW)	Travel Speed (m/min)	Travel Power (kW)	Work Duty FEM/ISO	H (mm)	C (mm)	Rail Gauge B(mm)
2	6/9/12/15/18	4.8/0.8	4/1	3.6/0.55	20/5	0.64	3m M6	699	620	110-150
3.2	6/9/12/15/18	4.8/0.8	4/1	3.6/0.55	20/5	0.64	2m M5	699	620	110-150
5	6/9/12/15/18	4.6/0.8	4/1	6.1/0.9	20/5	0.64	2m M5	730	650	120-180
6.3	6/9/12/15/18	4.6/0.8	4/1	6.1/0.9	20/5	0.64	1Am M4	730	650	120-180
8	6/9/12/15/18	4.2/0.7	4/1	9.0/1.4	20/5	0.95	3m M6	890	800	120-180
10.0	6/9/12/15/18	4.2/0.7	4/1	9.0/1.4	20/5	0.95	2m M5	890	800	120-180
12.5	6/9/12/15/18	4.6/0.8	4/1	11.0/1.8	20/5	0.95	1Am M4	890	800	120-180
16.0	6/9/12/15/18	3.5/0.6	4/1	15/2.3	20/5	0.95×2	2m M5	910	1000	120-180
20	6/9/12/15/18	3.5/0.6	4/1	15/2.3	20/5	0.95×2	1Am M4	910	1000	120-180

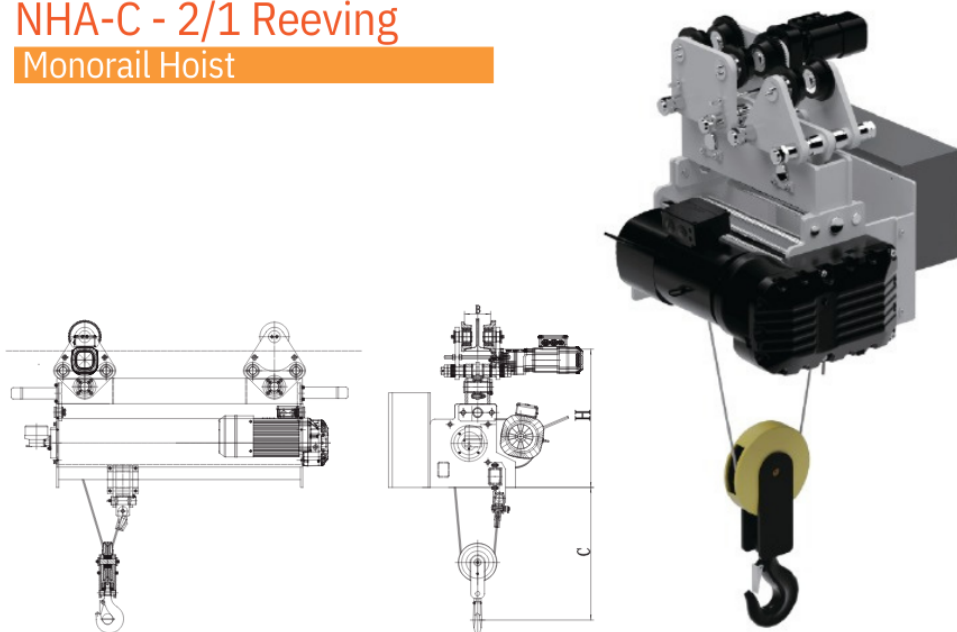
**NHA-C**  
Monorail Hoist



\* Note: can customized for curved traveling Min.R ≥900mm

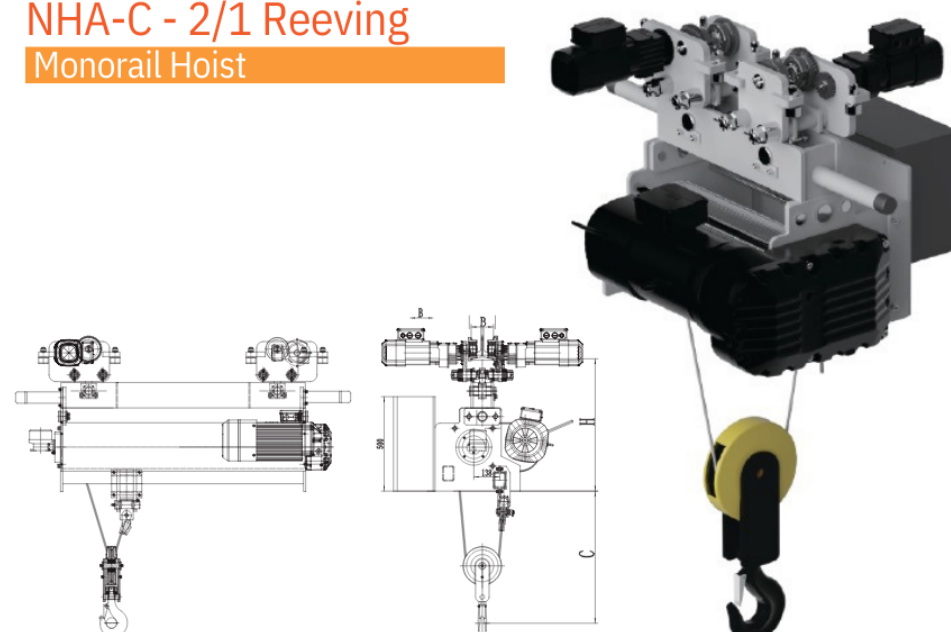
Capacity (t)	Lifting Height (m)	Lifting Speed (m/min)	Rope Reeving	Lifting Power (kW)	Travel Speed (m/min)	Travel Power (kW)	Work Duty FEM/ISO	H (mm)	C (mm)	Rail Gauge B(mm)	Min. Traveling Radius (mm)
2	6/9/12/15/18	4.8/0.8	4/1	3.6/0.55	20/5	0.64×2	3m M6	699	620	110-150	900mm-2500mm
3.2	6/9/12/15/18	4.8/0.8	4/1	3.6/0.55	20/5	0.64×2	2m M5	699	620	110-150	
5	6/9/12/15/18	4.6/0.8	4/1	6.1/0.9	20/5	0.64×2	2m M5	730	650	120-180	
6.3	6/9/12/15/18	4.6/0.8	4/1	6.1/0.9	20/5	0.64×2	1Am M4	730	650	120-180	
8	6/9/12/15/18	4.2/0.7	4/1	9.0/1.4	20/5	0.95×2	3m M6	890	800	120-180	
10.0	6/9/12/15/18	4.2/0.7	4/1	9.0/1.4	20/5	0.95×2	2m M5	890	800	120-180	
12.5	6/9/12/15/18	4.6/0.8	4/1	11.0/1.8	20/5	0.95×2	1Am M4	890	800	120-180	

## NHA-C - 2/1 Reeving Monorail Hoist



Capacity (t)	Lifting Height (m)	Lifting Speed (m/min)	Rope Reeving	Lifting Power (kW)	Travel Speed (m/min)	Travel Power (kW)	Work Duty FEM/ISO	H (mm)	C (mm)	Rail Gauge B(mm)
2	6-36	9.2/1.6	2/1	6.1/0.9	20/5	0.64	2m M5	730	700	110-150
3	6-36	9.2/1.6	2/1	6.1/0.9	20/5	0.64	1Am M4	730	700	110-150
5	6-36	8.4/1.6	2/1	9.0/1.4	20/5	0.64	2m M5	890	900	120-180
6.3	6-36	9.2/1.6	2/1	11.0/1.8	20/5	0.64	1Am M4	890	900	120-180
10	6-36	7/1.4	2/1	15/2.3	20/5	0.95	1Am M4	910	1100	120-180

## NHA-C - 2/1 Reeving Monorail Hoist



\* Note: can customized for curved traveling Min.R ≥900mm

Capacity (t)	Lifting Height (m)	Lifting Speed (m/min)	Rope Reeving	Lifting Power (kW)	Travel Speed (m/min)	Travel Power (kW)	Work Duty FEM/ISO	H (mm)	C (mm)	Rail Gauge B(mm)
2	6-36	9.2/1.6	2/1	6.1/0.9	20/5	0.37x2	2m M5	730	700	110-150
3	6-36	9.2/1.6	2/1	6.1/0.9	20/5	0.37x2	1Am M4	730	700	110-150
5	6-36	8.4/1.6	2/1	9.0/1.4	20/5	0.37x2	2m M5	890	900	120-180
6.3	6-36	9.2/1.6	2/1	11.0/1.8	20/5	0.37x2	1Am M4	890	900	120-180
10	6-36	7/1.4	2/1	15/2.3	20/5	0.55x2	1Am M4	910	1100	120-180